



Serving Franklin, Gadsden, Gulf, Jefferson, Leon, Madison, Taylor & Wakulla counties

# Big Bend HCC General Membership Meeting

Welcome  
Chad Abrams, Chair



Serving Franklin, Gadsden, Gulf, Jefferson, Leon, Madison, Taylor & Wakulla counties

# Big Bend HCC General Membership Meeting

Building Logistics & Introductions  
Chad Abrams, Chair

# BBHCC Board of Directors Report

Chad Abrams, Chair



Serving Franklin, Gadsden, Gulf, Jefferson, Leon, Madison, Taylor & Wakulla counties

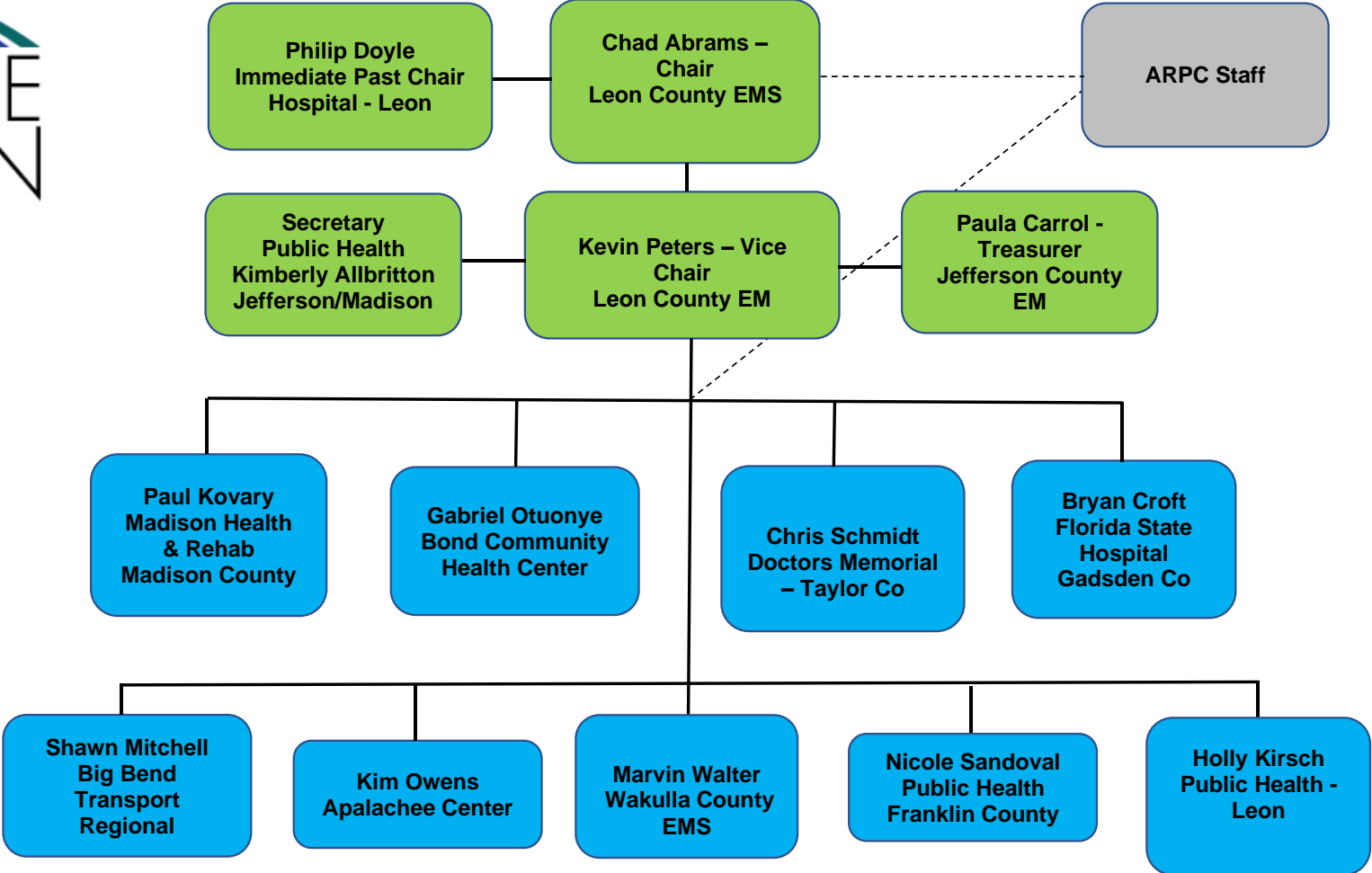


Serving Franklin, Gadsden, Gulf, Jefferson, Leon, Madison, Taylor & Wakulla counties

## BBHCC Board of Directors Membership

- Behavioral Health/Long Term Care
- Behavioral Health/Long Term Care
- Big Bend Transit – Regional
- Emergency Management
- Emergency Management
- Emergency Medical Services
- Emergency Medical Services
- FQHC Medical Centers/Regional
- Health and Rehab/Long Term Care
- Hospital
- Hospital
- Public Health
- Public Health
- Public Health

# BBHCC Board of Directors Members & Officers





Serving Franklin, Gadsden, Gulf, Jefferson, Leon, Madison, Taylor & Wakulla counties

## BBHCC Board of Directors Membership

- Board members serve 2-year terms beginning in even numbered years (2022, 2024, etc...) on July 1<sup>st</sup>
- Board members are replaced upon resignation
- Can serve two consecutive terms
- Officers are elected by the Board for 2-year terms beginning on July 1st
- Officers can serve two consecutive terms
- If an officer resigns, a new officer is elected at the next Board of Directors meeting



Serving Franklin, Gadsden, Gulf, Jefferson, Leon, Madison, Taylor & Wakulla counties

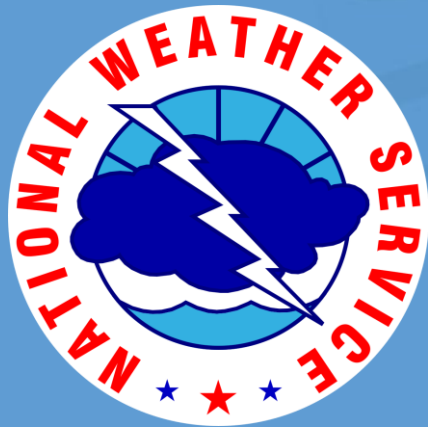
# Weather Outlook

Mark Wool, NWS Tallahassee

**Big Bend Healthcare Coalition Meeting**

# **2023 Spring Outlook**

**Tuesday, March 7th**



**Mark Wool**

**Warning Coordination Meteorologist**

**NWS Tallahassee, FL**





Serving Franklin, Gadsden, Gulf, Jefferson, Leon, Madison, Taylor & Wakulla counties

# 2023-2024 Member Project Funding

Christian Levings, EM Planning Manager



Serving Franklin, Gadsden, Gulf, Jefferson, Leon, Madison, Taylor & Wakulla counties

# Semi-Annual Communications Test

Elizabeth Todak, BBHCC Coordinator



Serving Franklin, Gadsden, Gulf, Jefferson, Leon, Madison, Taylor & Wakulla counties

# Planning Guidelines Under Development

Christian Levings, EM Planning Manager

- Radiation Surge Annex
- Pediatric Surge Updates
- Chemical Surge



Serving Franklin, Gadsden, Gulf, Jefferson, Leon, Madison, Taylor & Wakulla counties

# Training Update

Elizabeth Todak, BBHCC Coordinator

Training Plan:  
Member input?



Serving Franklin, Gadsden, Gulf, Jefferson, Leon, Madison, Taylor & Wakulla counties

# BBHCC Exercises Update

Elizabeth Todak, BBHCC Coordinator

- Completed Radiation & Pediatric TTX
- Q4 – Pediatric Surge (Working Group)
- MRSE & Chemical surge TTX



Serving Franklin, Gadsden, Gulf, Jefferson, Leon, Madison, Taylor & Wakulla counties

## Guest Speaker

Franklin Riddle

Region 4, Tampa Bay Health and  
Medical Preparedness Coalition

Briefing on Response to Hurricane Ian



Serving Franklin, Gadsden, Gulf, Jefferson, Leon, Madison, Taylor & Wakulla counties

# County Health Department Planner Reports

Franklin County  
Gadsden County  
Gulf County  
Jefferson County  
Leon County  
Madison County  
Taylor County  
Wakulla County

# Coalition Member and Partner Updates

Chad Abrams, Chair



Serving Franklin, Gadsden, Gulf, Jefferson, Leon, Madison, Taylor & Wakulla counties





Serving Franklin, Gadsden, Gulf, Jefferson, Leon, Madison, Taylor & Wakulla counties

# Next Big Bend HCC Meeting

**Save the Date:**

**September 6<sup>th</sup>, 2023 10 am**